

Integrate access control, video surveillance, alarm monitoring, and photo ID badging with the **Topaz Access Control System**. Topaz is packaged with everything you need to get your security system up and running quickly and reliably.

Topaz software includes a quick start menu for Auto Configuration and Batch Add cards, which you can activate instantly with a mouse click. Topaz uses a simple browser-style interface with full color maps, interactive icons, and point-and-click video. Packaged in complete two- and four-door starter kits and expansion kits, or as individual parts, Topaz provides everything you need for systems with up to 512 readers. Photo ID badging and report generation with preconfigured and custom reports are all part of your Topaz package.

Integrated video surveillance

View video from the Topaz User interface with the click of your mouse. Either click the video icon that's tagged to event details, or view live video by clicking the video button in the alarm queue. Connect as many as 16 cameras

to each of eight GE DVMRe Triplex series multiplexer/recorders on your Topaz network.

Robust communications options

Robust communications are built into your Topaz system. Every control panel has an onboard high-speed LAN/WAN connection while still allowing for RS-485, RS-232, and dial-up communications. You choose the best-fit options for every application.

Auto configuration

With a click of the mouse, you can initiate the Auto Configuration feature to detect RT panels, input/output modules, and modems on the system. You can then select the configured devices or add names to individual devices before saving. Use the Device Tree to view the entire system configuration at a glance.

Features

- Integrated GE Security DVMRe support adds video recording to events reported to the Topaz system
- Individual parts or packaged in complete kits for startup or expansion
- Browser-style interface with device tree
- Interactive color graphics with dynamic icons
- Photo ID and badging software included
- Instant Access
- Data Guard

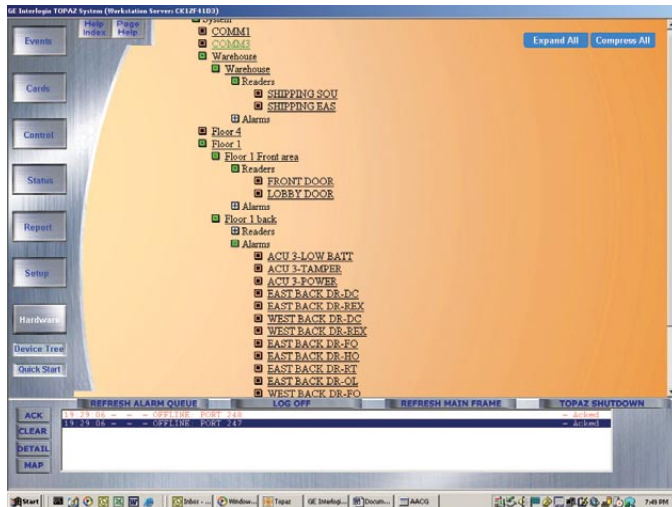
Topaz

Intelligent software for access control



Browser-style interface with interactive color graphics

The Topaz interface gives you a familiar browser-style environment to administer and operate the system. Dynamic alarm, reader, security area, and relay icons are displayed on color maps or other images in standard graphic file types. The icons have full drill-down capabilities to the device level. Use simple mouse clicks on the appropriate icons to acknowledge alarms or operate, arm, or disarm individual devices and doors or complete security areas.



Device Tree displays the system's configuration.

Fully functional workstations

You can add up to four full workstations to the server, which also operates as a workstation. Both the server and the workstations include dynamic and fully interactive maps with onscreen video call up, PTZ control, and report and event printing. Each station can also be used as an enrollment or assessment station for the integrated photo badging system.

Badging

Create badges easily with Topaz's integrated video badging and photo ID facilities. Features include a badge design and drawing package with multilayer design tools, drag and drop capabilities, and a full editing package.

The digital photo capture tool provides image manipulation capabilities. In addition, it features multiple-frame capture so your subject can choose the best likeness from several photos. Photos may also be imported from remote video cameras and digital still cameras.

Report generation

Report generation is extremely easy through dozens of preconfigured reports, arranged by cardholders, operators, device types, system events, alarm events, alarm history, and operator actions. The system is also equipped with a point-and-click customizable Employee Report Generator tool with multilevel filtering.

Instant access

Topaz panels are not host-dependent. Each panel has a resident database of users and security information so it always keeps functioning. Topaz provides access operations and alarm monitoring, even during system communication loss or data downloads.

Data guard

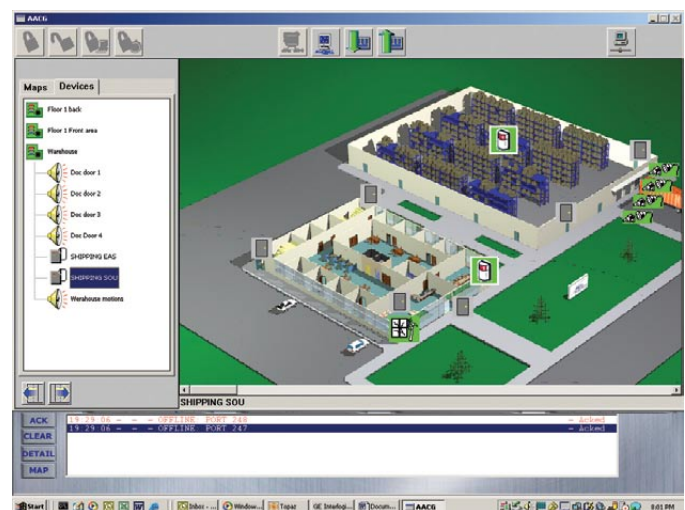
Topaz eliminates the potential for database corruption in field panels due to communication failures during downloads. The Data Guard feature copies data to local memory during a download, then verifies the accuracy of the data before updating the panel database, ensuring the integrity of the data.

CCTV camera with PTZ control

Add a video switcher to your network for a complete CCTV camera display with pan/tilt/zoom control to view an entire area. These features are available directly from any of the interactive color graphic maps.

Entry and exit delays by area

Configuring a short time delay before reporting an alarm allows ingress or egress while the system disarms or arms. Set each area with an individual delay.



Browser-style graphical interface can drill down to device level.



Specifications

Americas
503-885-5700
888-GE-SECURITY
(437-3287)
info@gesecurity.com
www.gesecurity.com

Asia
tel 852-2907-8108
fax 852-2142-5063

Australia
tel 61-3-9259-4700
fax 61-3-9259-4799

Europe
tel 32-2-725-11-20
fax 32-2-721-86-13

Latin America
tel 305-593-4301
fax 305-267-4300

System Capacity

- Readers: 256 (512 with additional license)
- Cardholders: 10,000
- Digital video multiplexer/ recorders: 8
- Cameras: 128
- Field panels: 64 (128 with additional license)
- Alarm points: 2,048
- Relay outputs: 1,024
- Time schedules: 127
- Event buffer size: 250,000
- Operator password: 64
- Holidays: 32
- Serial ports: 5
- Color graphics: Yes
- Elevator control: Yes
- CCTV switching: Yes
- Photo IDbadging: Yes
- Access groups: 64
- Security areas: 255
- Access groups/card: 8
- Security areas/card: 8
- Workstations (in addition to file server): 4

PC Requirements

- Intel® Pentium® 4 processor @ 1.8 GHz
- Windows XP Pro or 2000 Pro operating system
- Monitor resolution: 1024 x 768 pixels; 16-bit color
- RAM: 1GB minimum
- Video memory: 4MB
- 3.5 in. 1.44MB floppy drive
- Disk space required: 2GB
- CD-ROM drive: 20X
- Sound card and speakers: Yes
- USB port: 1 minimum for Software Sentinel
- Ethernet card: TCP/IP

Ordering information

System Kits

Each kit includes cards, readers, ACURT panel, RS-232 to RS-485 converter, plug-in transformer, Topaz software, and back-up batteries

TPZ-SYS-A	Two-reader system (two TPZ-RPP2-60 readers)
TPZ-SYS-B	Two-reader system (two TPZ-RPP2-50 mullion readers)
TPZ-SYS-C	Four-reader system (four TPZ-RPP2-60 readers)
TPZ-SYS-D	Four-reader system (four TPZ-RPP2-50 mullion readers)

Expansion Kits

Each kit includes ACURT panel, enclosure, readers, plug-in transformer, and back-up batteries

ACURT2-EX-PP	Two-reader control panel with two TPZ-RPP2-60 readers
ACURT2-EX-MU	Two-reader control panel with two TPZ-RPP2-50 (mullion) readers
ACURT4-EX-PP	Four-reader control panel with four TPZ-RPP2-60 readers
ACURT4-EX-MU	Four-reader control panel with four TPZ-RPP2-50 (mullion) readers

RCR-REX PIR

RCR-REX-W	Dual-technology request-to-exit motion sensor, DPDT, Form C, includes wall plate, white
-----------	---

Software and Hardware

TPZ-RIM-1	Remote 16-Input Module with enclosure and lock
TPZ-RRM-1	Remote 16-Relay Output Module with enclosure and lock
ACURT2	Two-reader control panel with 16MB RAM, LAN port
ACURT4	Four-reader control panel with 16MB RAM, LAN port
TPZ-SRVR-SW	Topaz server software
TPZ-WKSTA-SW	Topaz workstation software

Video Imaging and Badging

TPZ-VIB	Badging kit with capture card
TPZ-PRINTER-1	Hand-fed ID card printer
TPZ-PRINTER-2	Hopper-fed ID card printer
TPZ-VPO-4	50 PVC overlays for TPZ-CPP2-1 (ProxCARD II)
TPZ-CBP-A1	50 direct print PVC cards (no technology)
TPZ-REFILL1	Replacement film for Printer 1
TPZ-REFILL2	Replacement film for Printer 2

Additional Topaz parts are listed in the price guide.