

# MAXIMUS MPX RANGE, BRACKETS

## MPXWBA WALL MOUNT BRACKET

Made of AISI 316L electropolished stainless steel

Load rating: 40kg (88lb)

Length: 400mm (15.7in)

Can be coupled with modular components (MPXCW, MPXCOL).

## MPXCOL POLE MOUNT ADAPTOR

Made of AISI 316L electropolished stainless steel

For pole diameters: from 110mm (4.3in) up to 150mm (5.9in)

Load rating: 50kg (110lb)

Dimensions: 198x182mm (7.8x7.2in)

## MPXCW CORNER MOUNT ADAPTOR

Made of AISI 316L electropolished stainless steel

Load rating: 50kg (110lb)

Dimensions: 335x186mm (13.2x7.3in)

Suitable for: MPXWBA, MHXWBS

## MPXWBTA PARAPET OR CEILING MOUNTING BRACKET

Made of AISI 316L electropolished stainless steel

Load rating: 40kg (88lb)

Dimensions: Ø 238mm (9.4in)



MPXWBA



MPXCOL



MPXCW



MPXWBTA

## TECHNICAL DATA

### MPXWBA WALL MOUNT BRACKET

Made of AISI 316L electropolished stainless steel

Load rating: 40kg (88lb)

Length: 400mm (15.7in)

Can be coupled with modular components: MPXCW, MPXCOL

Unit weight: 5.2kg (11.5lb)

#### PACKAGE

Model Number	Weight	Dimensions (WxHxL)	Master carton
MPXWBA	6.1kg (13.5lb)	43.5x42x20cm (17x16.5x8in)	4

### MPXCOL POLE MOUNT ADAPTOR

Suitable for MPXWBA

Made of AISI 316L electropolished stainless steel

For pole diameters: 110-150mm (4.3-5.9in)

Load rating: 50kg (110lb)

Unit weight: 4.5kg (9.9lb)

#### PACKAGE

Model Number	Weight	Dimensions (WxHxL)	Master carton
MPXCOL	4.9kg (10.8lb)	24x15x21.5cm (9.4x6x8.5in)	6

### MPXCW CORNER MOUNT ADAPTOR

Suitable for MPXWBA

Made of AISI 316L electropolished stainless steel

Load rating: 50kg (110lb)

Dimensions: 335x186mm (13.2x7.3in)

Unit weight: 3.6kg (7.9lb)

#### PACKAGE

Model Number	Weight	Dimensions (WxHxL)	Master carton
MPXCW	4.8kg (10.6lb)	36.5x25.5x26cm (14.4x10x10.2in)	5

### MPXWBTA PARAPET OR CEILING MOUNTING BRACKET

Made of AISI 316L electropolished stainless steel

Load rating: 40kg (88lb)

Dimensions: Ø 238mm (9.4in)

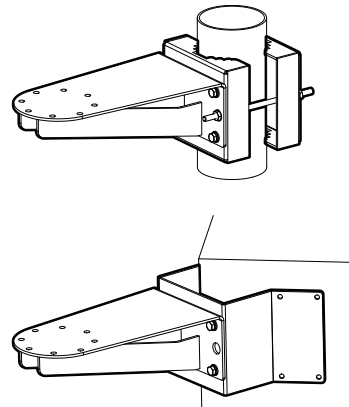
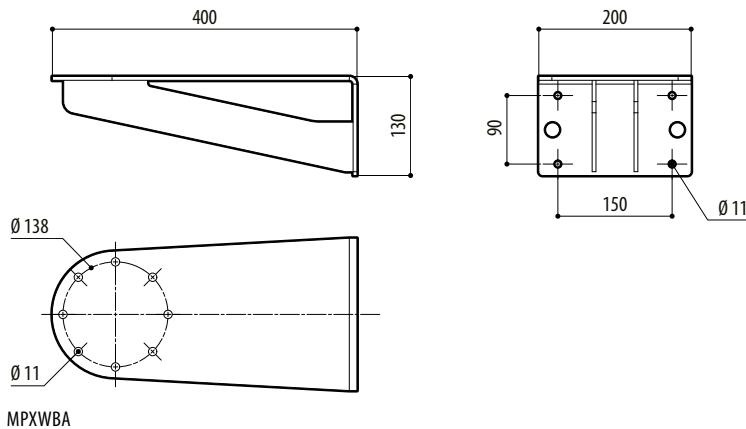
Unit weight: 2.8kg (6.2lb)

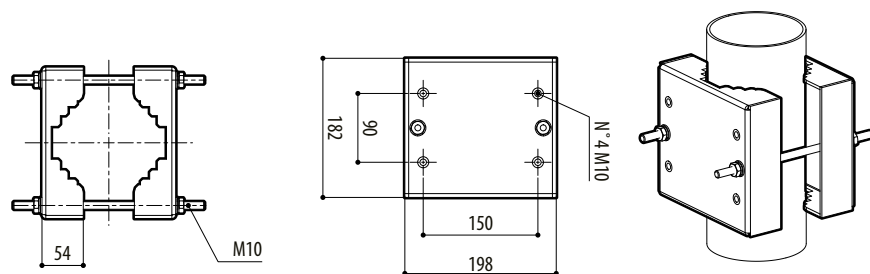
#### PACKAGE

Model Number	Weight	Dimensions (WxHxL)	Master carton
MPXWBTA	3.2kg (7.1lb)	33x27x6.5cm (13x11x2.4in)	-

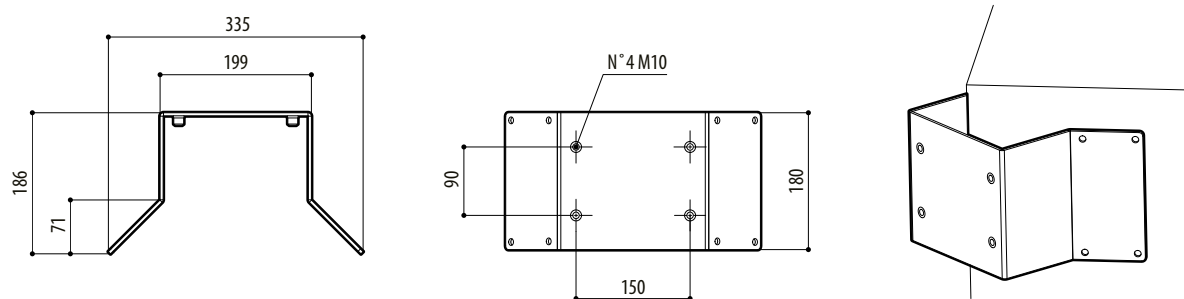
## TECHNICAL DRAWINGS

The dimensions of the drawings are in millimetres.

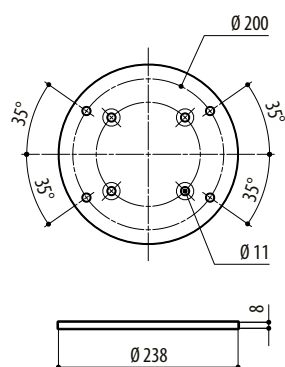




MPXCOL



MPXCW



MPXWBTA